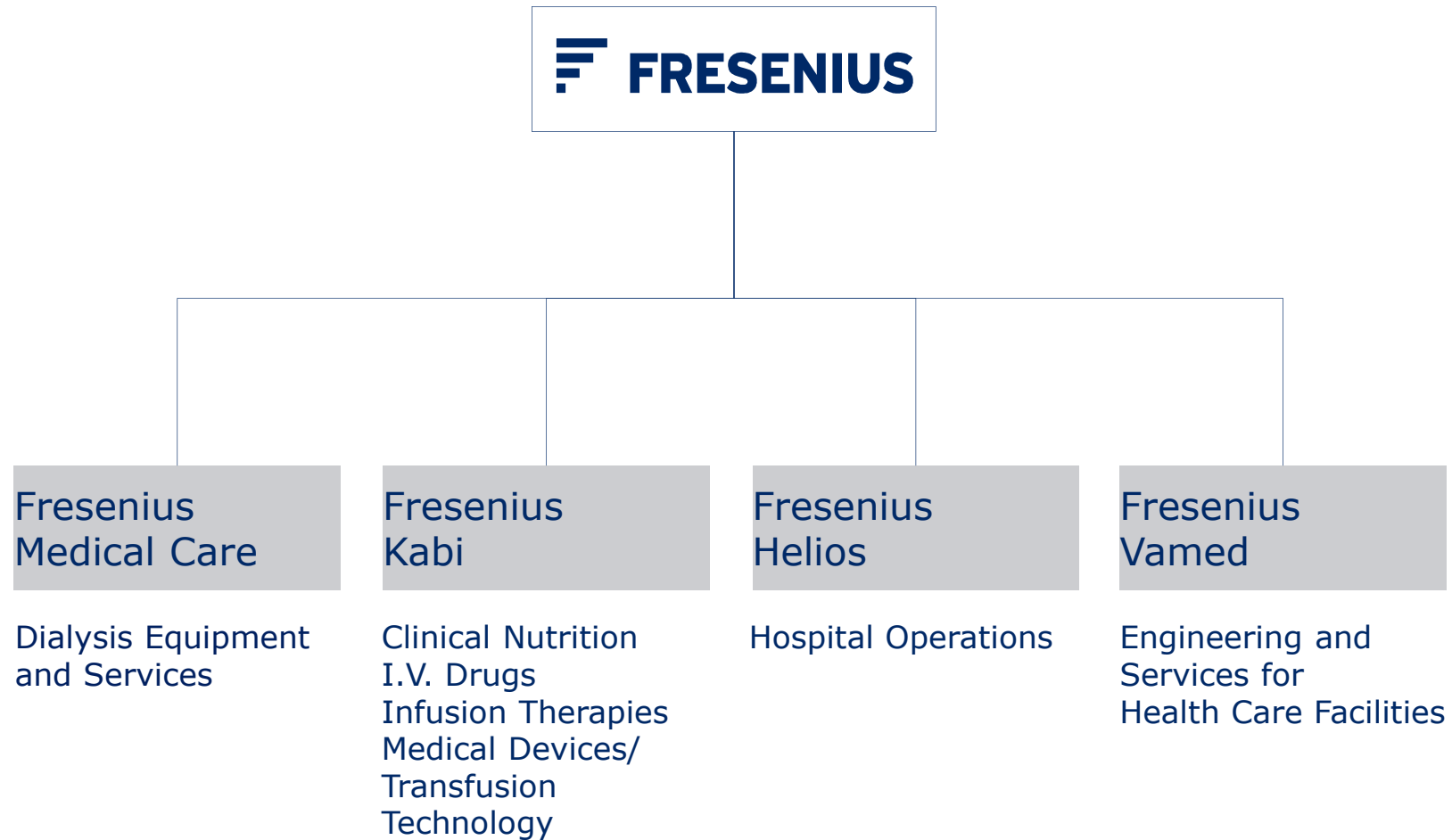


An Example Of Visual Six Sigma, with JMP® Scripting at Fresenius Kabi plant Cavezzo - Italy

JMP Discovery Summit 2015,
Brussels, 25 March 2015

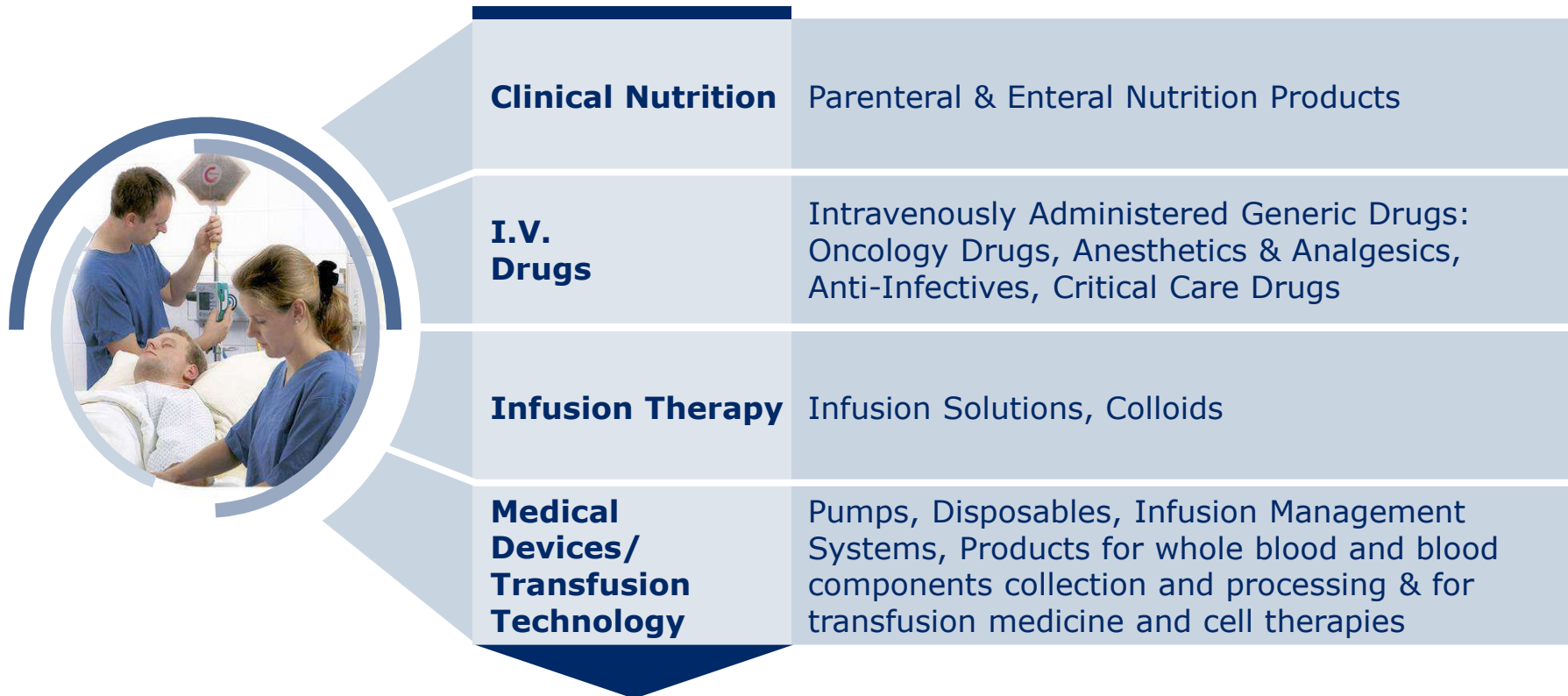


The Fresenius Group



The Business

Pharmaceuticals and Medical Devices



High quality and affordable products for the therapy and care of critically and chronically ill patients in hospital and outpatient care

About the Project

Project Objective:

Create an online process supervisor of a new, automated manufacturing line




Project timeframe: 6 weeks

Toolbox:

- SQL data server, JMP11
- 2-day scripting course
- 2-day project workshop



© 2015 CS Odessa Corp. 

About the Authors

JMP trainer,
Scripting Expert



S. Hoffmeister

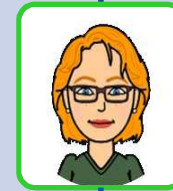
OPEX team,
SQL data feed
Project Manager



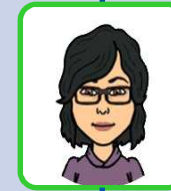
A. Girotti
IT Manager



L. Zambianchi
Six Sigma
Black Belt



S. Bergonzini
Sr. Process
Validation
Specialist



E. Caiazza
Process
Validation
Specialist



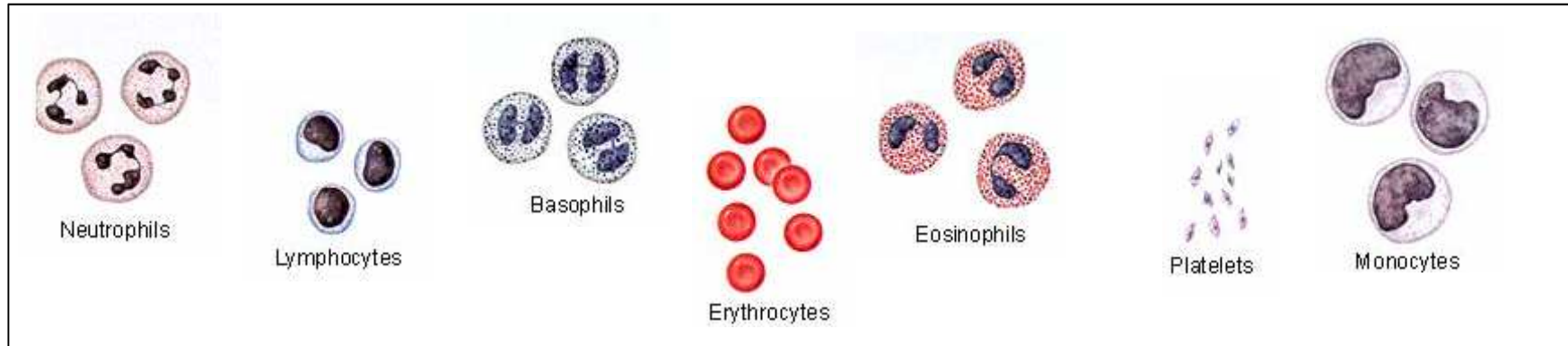
L. Ferraresi
Process Eng.
Filter
Assembling

Agenda

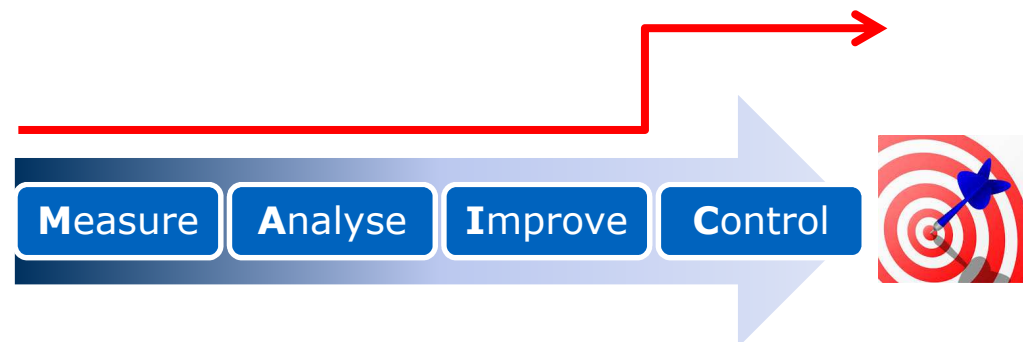
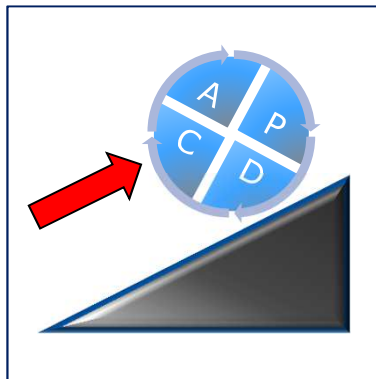
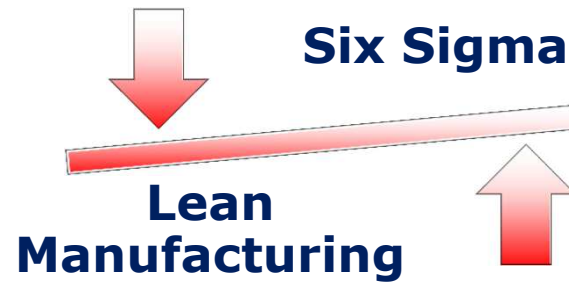
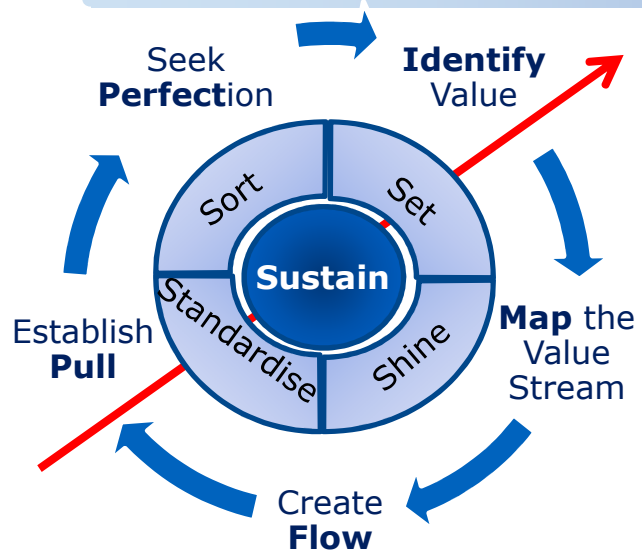
- Introduction & scope
- Foreword
- Process Map
- Project Work Breakdown Structure
- Structure of the JSL interface and «How To»
- Demo
- Conclusion



Leukodepletion



Lean (&) Six Sigma

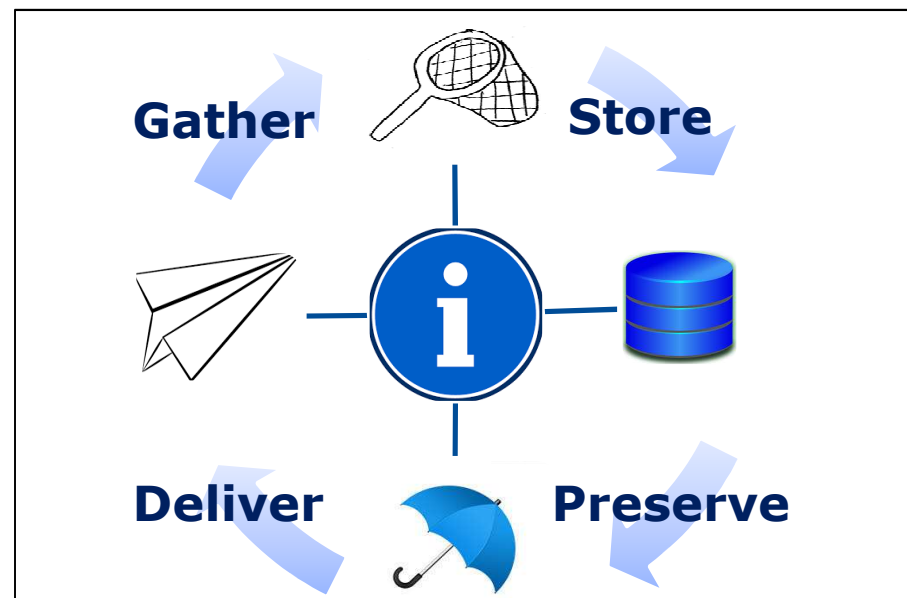


Information management



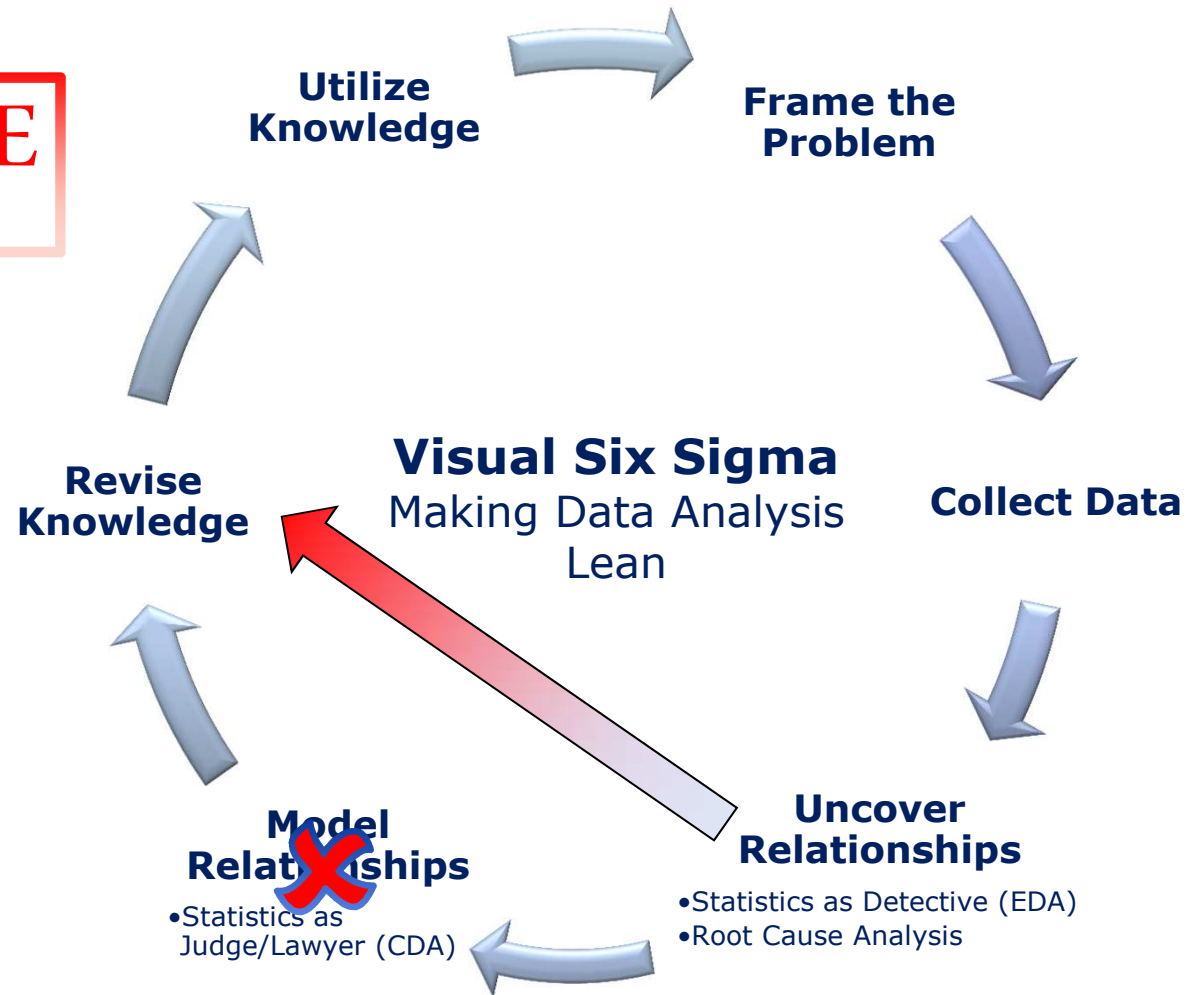
**In any process,
the flow of information is
a process itself.**

Information Management

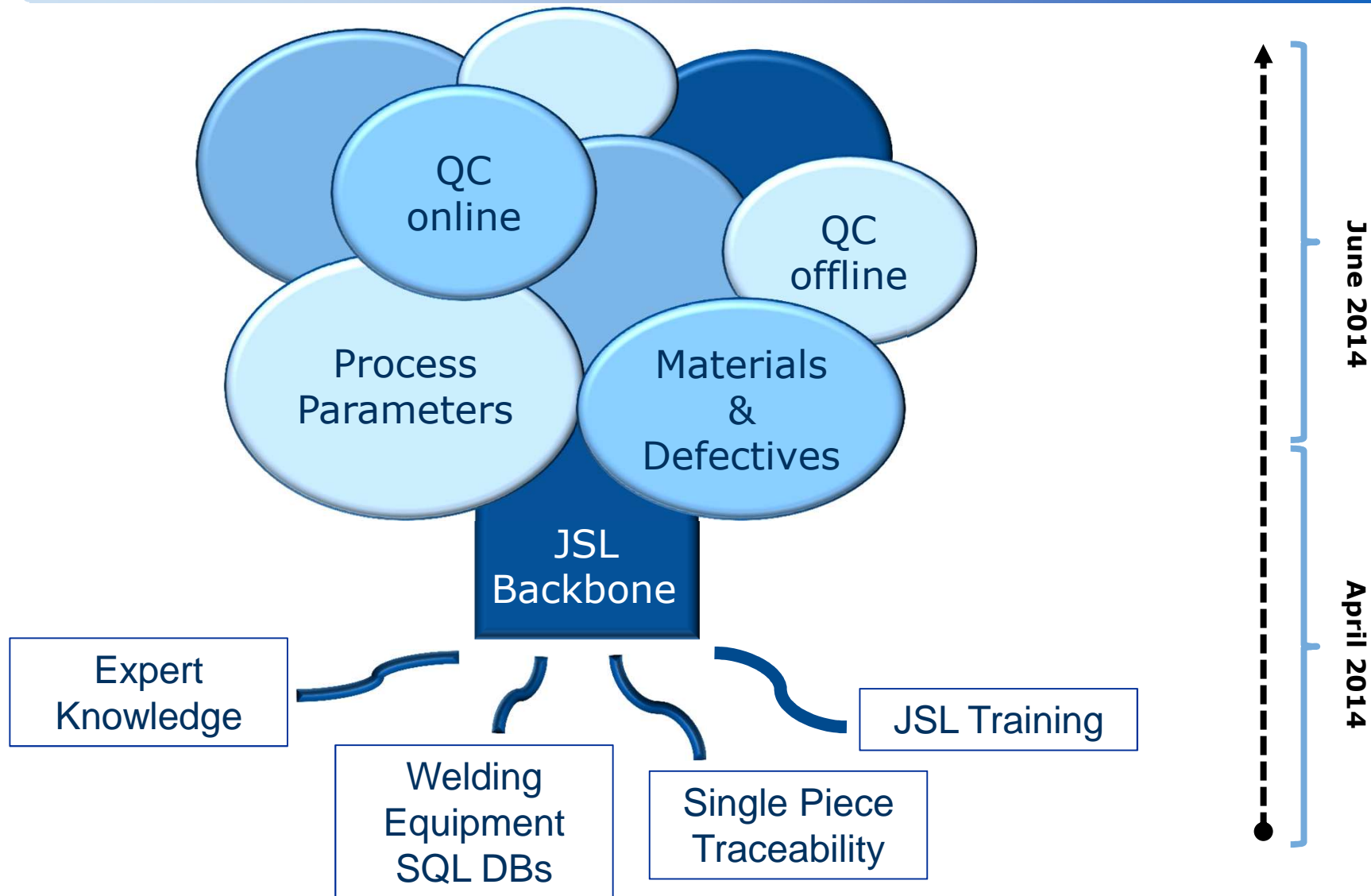


Design for Visual Six Sigma - DfVSS

JUST IN TIME

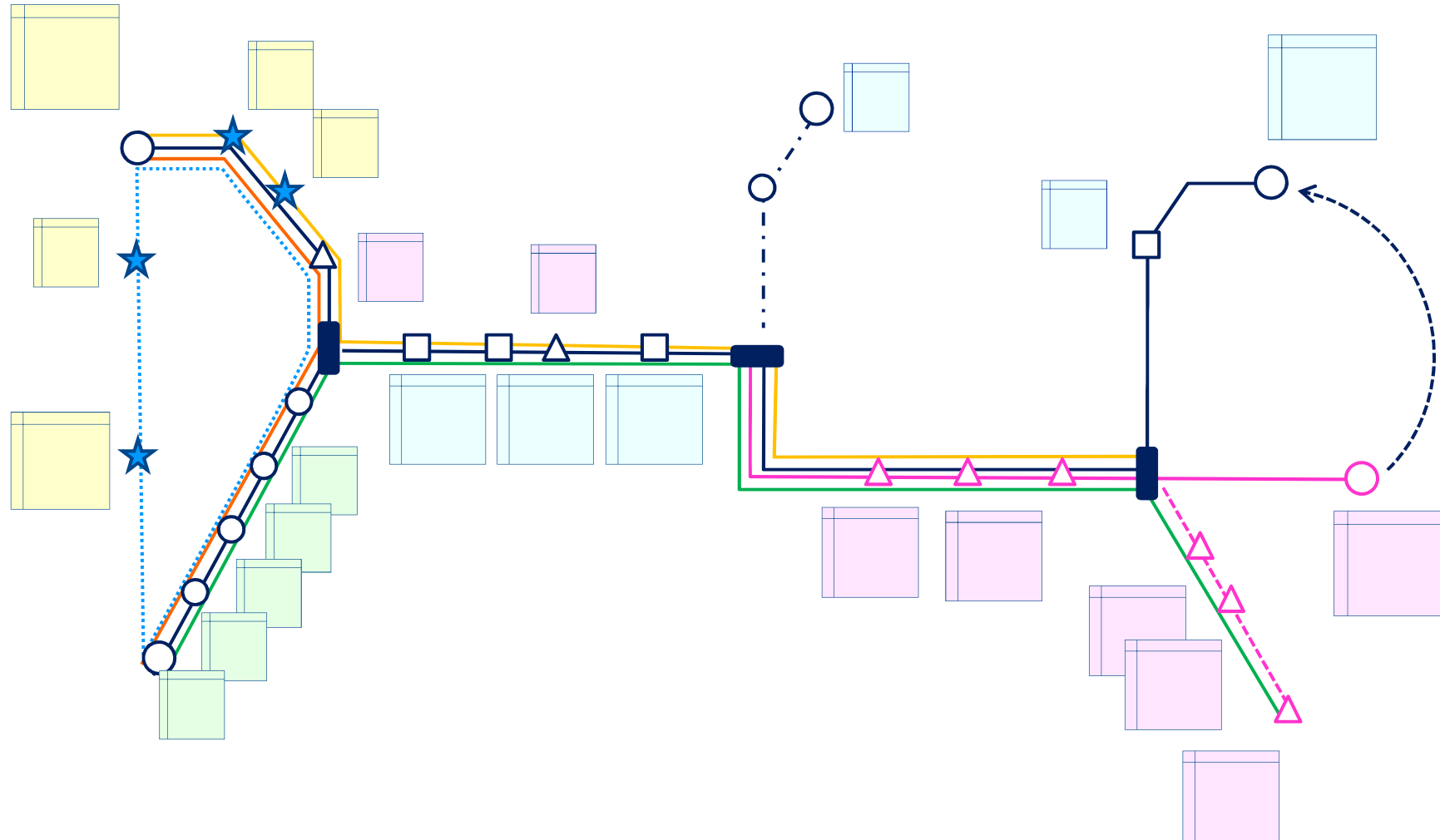


The Project (s)

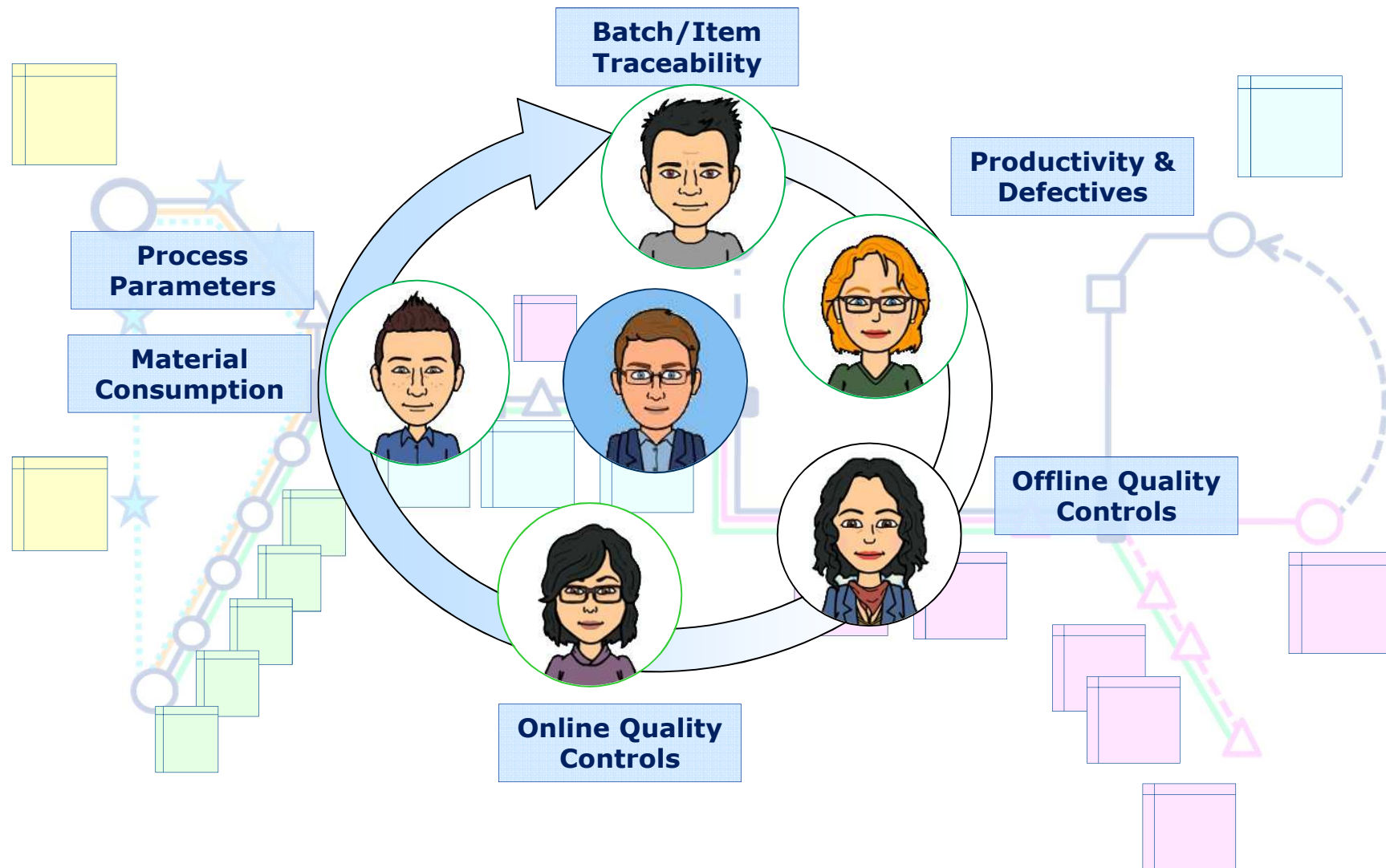


Process Map*

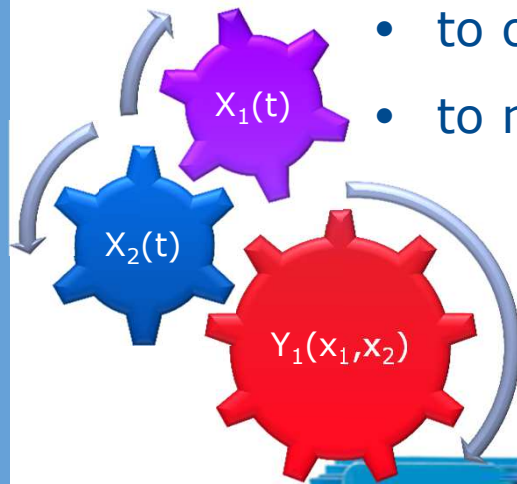
*schematic drawing not reflecting the real process



Work Breakdown Structure (WBS)

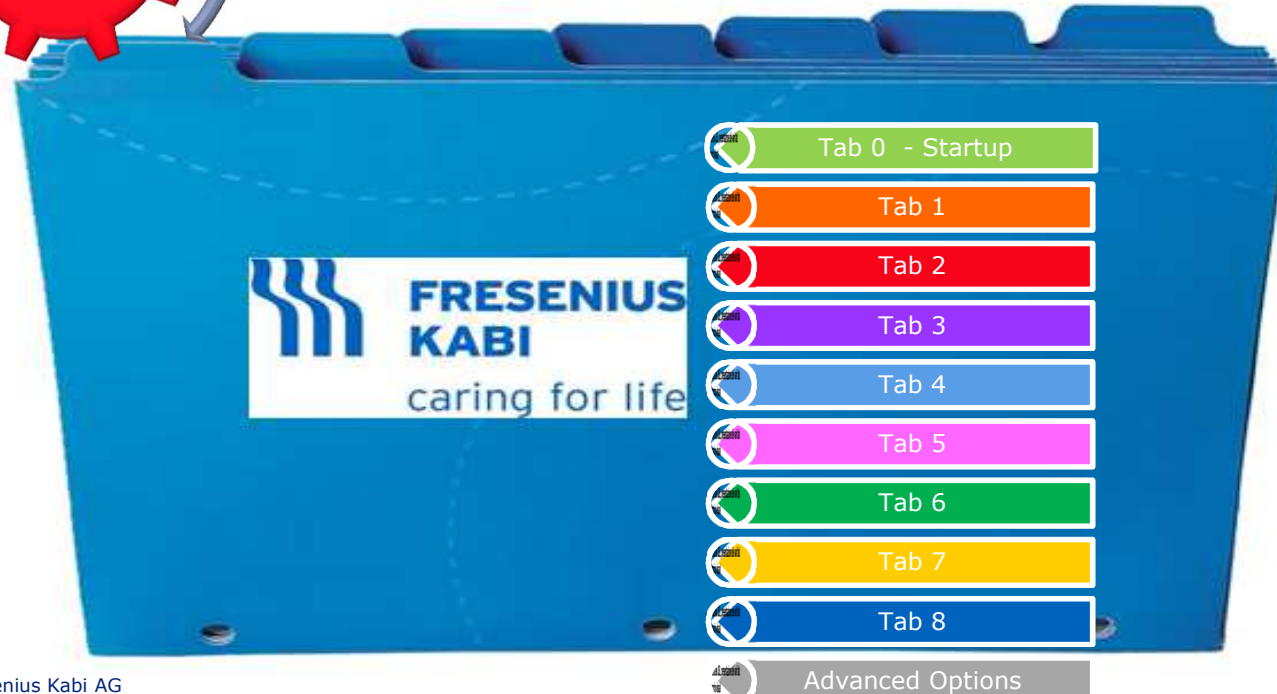


Structure of the JSL



- to organize Functions and Parameters profiles → **JSL**
- to manage X's and Y's information → **USERS**

TAB BOX



Disclaimer

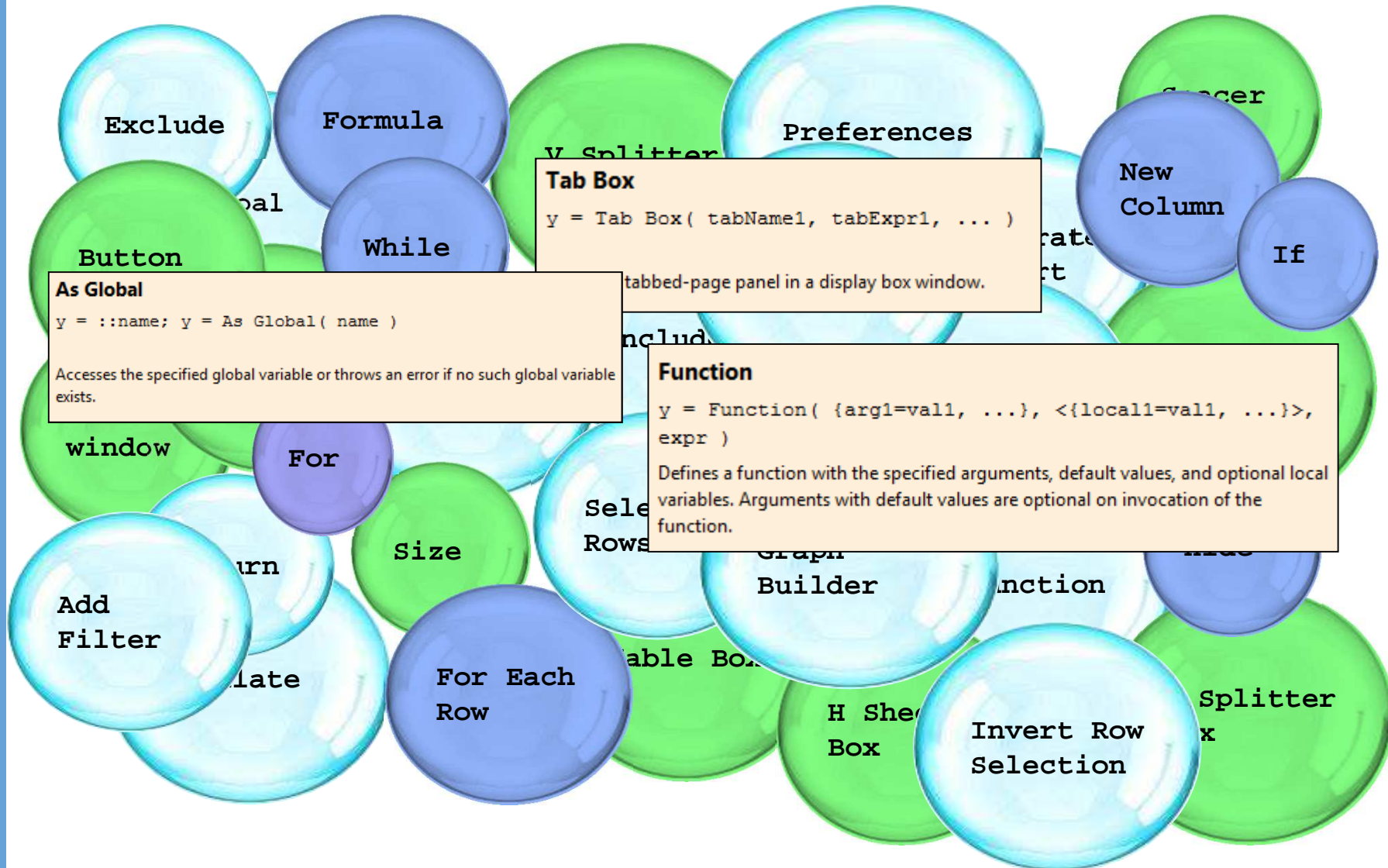
For confidentiality reasons, the demo that follows has been modified from the original version of the JSL script in these points:

- The database is static and local
- Graphs and tables are without labels
- Some figures have been modified from the original

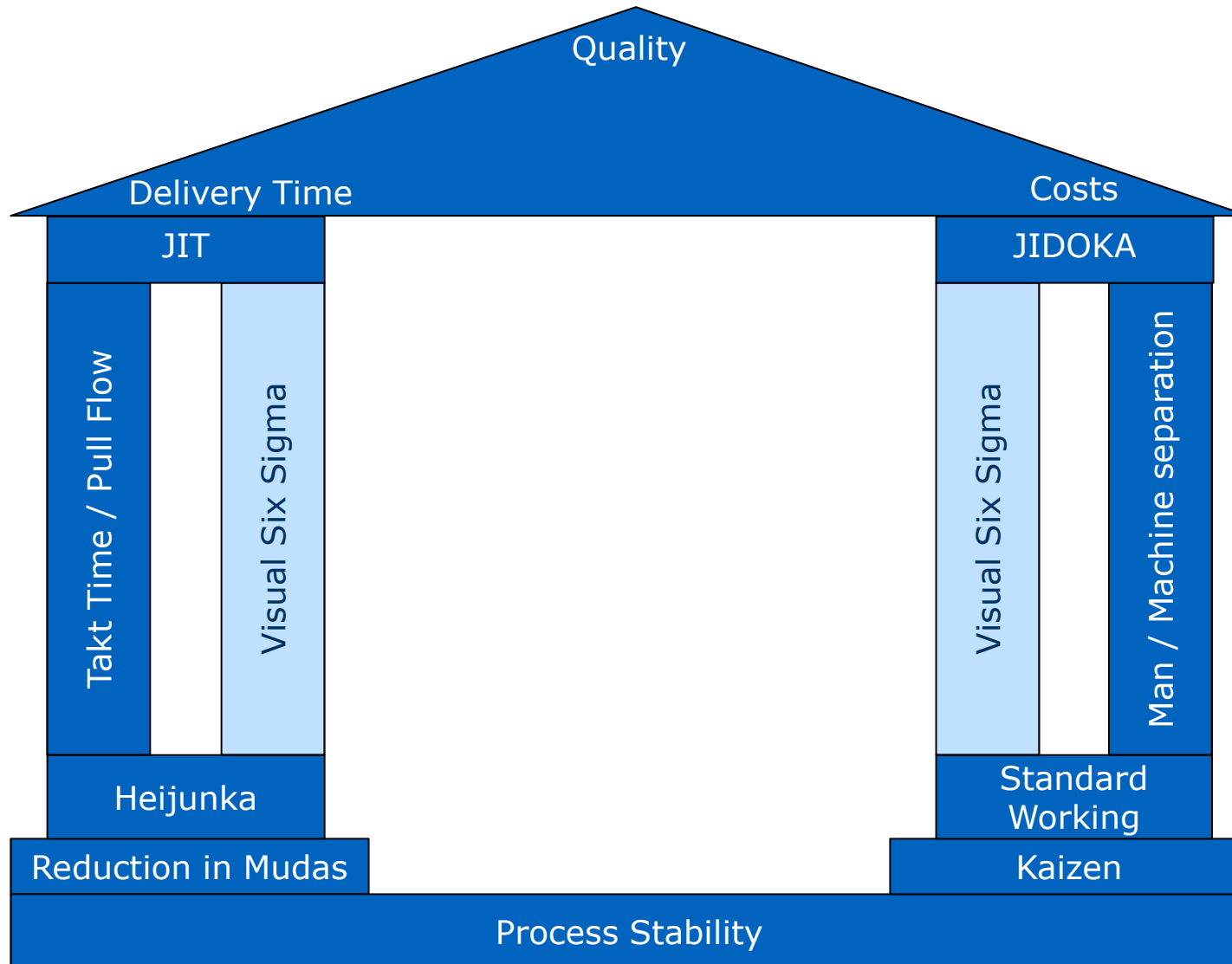


JMP Application

JSL functions and commands



Our Vision



Conclusions



Everything should be made as simple as possible, but no simpler.

A. Einstein

Excellence is never an accident. It is always the result of high intention, sincere effort, and intelligent execution; it represents the wise choice of many alternatives - choice, not chance, determines your destiny.

Aristotele



© Can Stock Photo - csp7013611