
Instructions for Updating JMP Clinical 17 to v17.x - Windows


These instructions describe the process for updating JMP Clinical 17.x to 17.x+1 on your Windows desktop machine.

If you are upgrading JMP Clinical from v8.2 or earlier to v17.x, you must use a full installer. If you are upgrading from JMP Clinical v17.0 to either v17.1 or 17.2, or from JMP Clinical v17.1 to v17.2, can use either a full installer or an updater. If you are using the full installer, you should follow the instructions in the [Installation Guide For JMP Clinical 17 - Windows](#). If you are using the updater, proceed as described below.

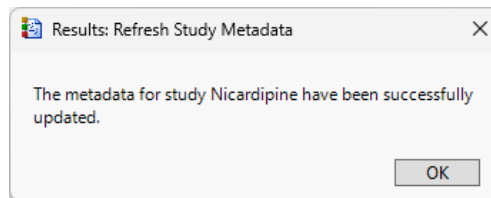
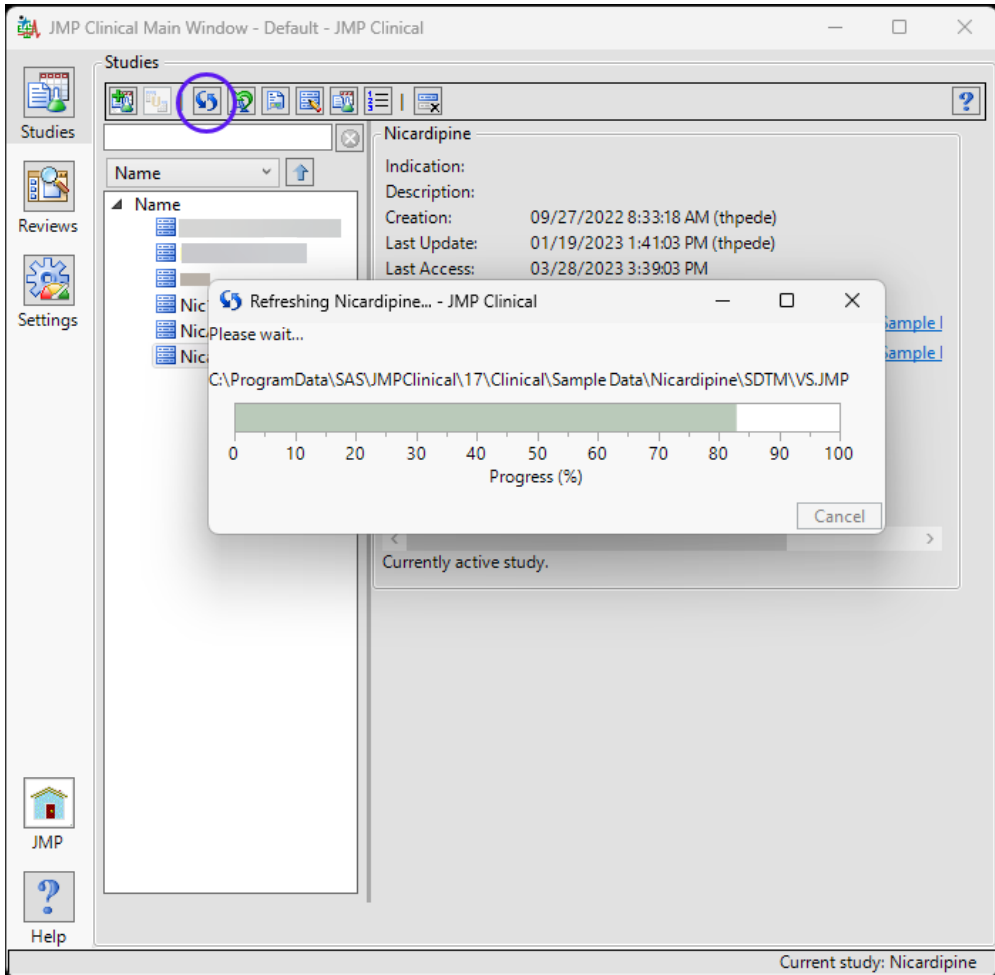
Step 1: Install the upgraded version of JMP Clinical 17.x+1

Click the executable and follow the prompts.

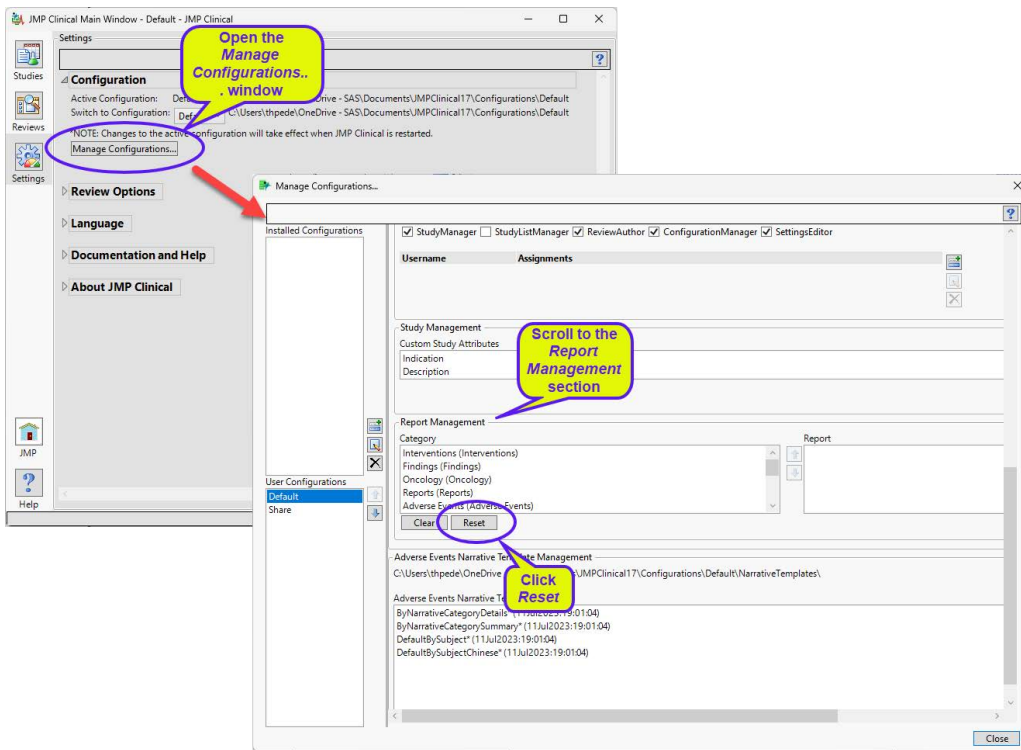
Step 2: Refreshing your studies and resetting the configuration

- 🔗 Open JMP Clinical and open the **Studies** tab
- 🔗 Select one or multiple studies and click  to refresh that study.

2 Instructions for Updating JMP Clinical 17 to v17.x - Windows



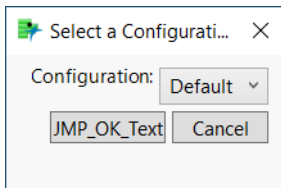
- ☞ Select one of studies as the Current study.
- ☞ Click on the **Settings** tab and then click **Manage Configurations...** to open the The Manage Configurations... Window.



- ☞ Navigate to the Report Management section and click **Reset**.
- ☞ Close the The Manage Configurations... Window. and then close JMP Clinical.
- ☞ Reopen JMP Clinical and proceed as normal.

Step 3: Resetting the Cache (optional)

You will not need to perform this step, unless the following window appears when you open JMP Clinical for the first time after the update:



If this window appears, complete the following steps:

- ☞ Exit JMP Clinical.
- ☞ Navigate to <DOCUMENTS>/JMPClinical17/ Default17/Localizations and delete the folder.

4 *Instructions for Updating JMP Clinical 17 to v17.x - Windows*

- ☞ Navigate to each configuration's localization folder (<DOCUMENTS>/JMPClinical17/<CONFIGURATION NAME >/Localizations) and delete each folder
- ☞ Restart JMP Clinical.