

---

# Installation Instructions for JMP Clinical 17 - Windows

---

These instructions describe the process for downloading and installing JMP Clinical 17 on your Windows desktop machine. These instructions include two major sections:

## 1 Download the Software

JMP Clinical 17 is downloaded using a utility program called the SAS Download Manager. You will first download and install the SAS Download Manager and then run the Download Manager to download the installation files for JMP Clinical as described in [“Step 1: Download and Run the SAS Download Manager Application,” p. 2.](#)

The installation files are placed in a folder known as the SAS Software Depot.

## 2 Install the Software

Follow the instructions detailed in [“Step 2: Install JMP Clinical Software,” p. 12.](#)

### Before installing JMP Clinical, you should note the following important items:

- A SAS software depot can be used by multiple users. If there are multiple JMP Clinical users at your site, either the site administrator or a designated user should download the software (either electronically or from the DVDs) to a single SAS software depot. This depot should be located on a network server that is accessible to every user. Registered users can then use that single depot to install the software on their local machines.
- You should keep at least one copy of your SAS software depot, in case you need to re-install the software again in the future.
- You must have 64 bit JAVA 8 or later installed on the 64-bit client machine before installing JMP Clinical. Software can be downloaded from the Oracle website (<https://www.oracle.com/technetwork/java/javase/downloads/jre8-downloads-2133155.html>).

---

## Description of Your Package

You will receive an email listing your site’s order number, an installation key code specific to this order, and contact information for SAS Technical support.

---

### Your Order Information:

Order Number:  
SAS Installation Key:  
Date:  
Space Required for SAS Software Depot:

XXXXXXXXXX  
XXXXXXXXXXXXXXXXXXXX  
November 18, 2022  
904.5MB

SAS Installation Representative

XXXXXXXXXX

Email Address

XXXXXXXXXX

Tech Support Site Number

XXXXXXXXXX

---

### Information for Tech Support Site 70297660:

Site Name:  
Tech Support Site Number:  
Contracts Site Number:  
Operating System:  
Internal Reference:  
License File:

JMP Clinical 17 exp 2026  
XXXXXXXXXX  
XXXXXXXXXX  
Microsoft® Windows® for x64  
JMP 17.0, Rev. IND\_22w47  
JMP170\_0B5HJT\_70297660\_Win\_X64.txt

Product(s) Ordered  
JMP Clinical

---

---

## Step 1: Download and Run the SAS Download Manager Application

**You will NOT need to install the SAS Download Manager if:**

- Your IT administrator has already done so. You will need to know the location of the SAS software depot. You should skip Step 1 and proceed directly to [“Step 2: Install JMP Clinical Software,” p. 12.](#)

**You will need to install the SAS Download Manager if:**

- You are a single user of JMP Clinical software.
- You are an IT administrator managing the software for multiple users.

The email listing your site’s order number and installation key code will also contain a link (circled below) to the SAS Download Manager. The SAS Download Manager application must be downloaded and used to generate a local SAS Software Depot before JMP Clinical can be installed.

Please follow the steps below.

**Please do not forward this email.** As the JMP administrator, you are the only person at your site authorized to download the software. Multiple downloads of this order are not possible. The set of files you download can be shared with authorized users for JMP software installation. The use of this software, including the number of allowed installations, is governed by the terms of your license agreement.

## 1 Downloading the SAS Download Manager.

Using the link below, download the SAS Download Manager.

<http://www.sas.com/downloadmgr>

The SAS Download Manager is the application you must use to download your JMP Software.

## 2 Using the SAS Download Manager to download your JMP software.

Start the SAS Download Manager when you are ready to begin downloading your software. You will need the following information:

- Order number: 0B5HJT
- SAS installation key: 3G7S-C8H5-ZHD1

This step creates a SAS Software Depot that contains the installation files for your software.

## 3 Distributing the SAS Software Depot.

You are now ready to distribute the set of downloaded files to authorized users within your organization. The set of files downloaded (Software Depot) includes the software installer and license file. Use this Depot for other authorized users at your site by placing it in a shared location. If you need to copy or move the downloaded files, make sure the Software Depot is copied in full.

## 4 Installing the software.

Authorized users in your organization can now install your software.

To launch the JMP Installation program from your SAS Software Depot, navigate to the proper location and use the command appropriate to your operating system

For JMP Clinical:  
Windows: \JMP\JMP\_Clinical\17\_0\Windows\jmpclin\_\_1700\_\_win.exe  
Macintosh: /JMP/JMP\_Clinical/17\_0/Macintosh/jmpclin\_\_1700\_\_mac.dmg

Please reference the special Administrator information page - <http://www.jmp.com/administrator>

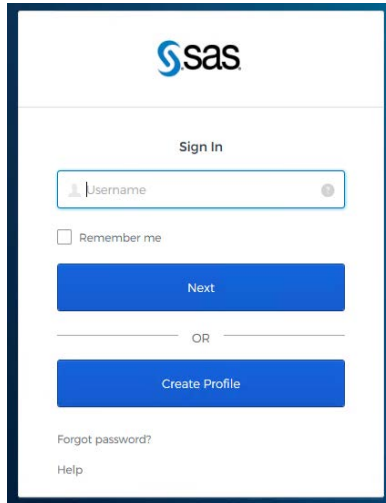
If you have questions about using this software, please email [support@jmp.com](mailto:support@jmp.com).

☞ Click the link in step 1 of the emailed instructions (circled above) to open the **Downloads** window in your web browser.

☞ Click on the link to the SAS Download Manager (circled below).



A window might open asking you to log on to your SAS Profile.



- ☞ Either log on to your existing SAS Profile or create a new Profile.
- ☞ Click on the link to the appropriate **SAS Download Manager** and select your Windows platform. In this example, we are installing 64-bit JMP Clinical 17 on a Windows 10 machine. Therefore, we chose Microsoft Windows for x64.

[All Downloads](#)

## Downloads

### SAS Download Manager

Release 2.64 - JUN 2021 Mac, Windows, UNIX, z/OS

The SAS Download Manager is a Java-based client that can access the SAS software repository in order to download selected SAS orders. The JRE required by the SAS Download Manager is included with the download below and will be installed into a temporary directory. It is not necessary to download the application to the same location you intend to eventually install your SAS software order. To use the SAS Download Manager, click on the README link below in the file format of your choice and review the instructions. Click on the Request Download link to download the self-extracting file.

For more information about using the SAS Download Manager specifically for z/OS, see the documentation available at <http://support.sas.com/documentation/installcenter/94/mvs/index.html>.

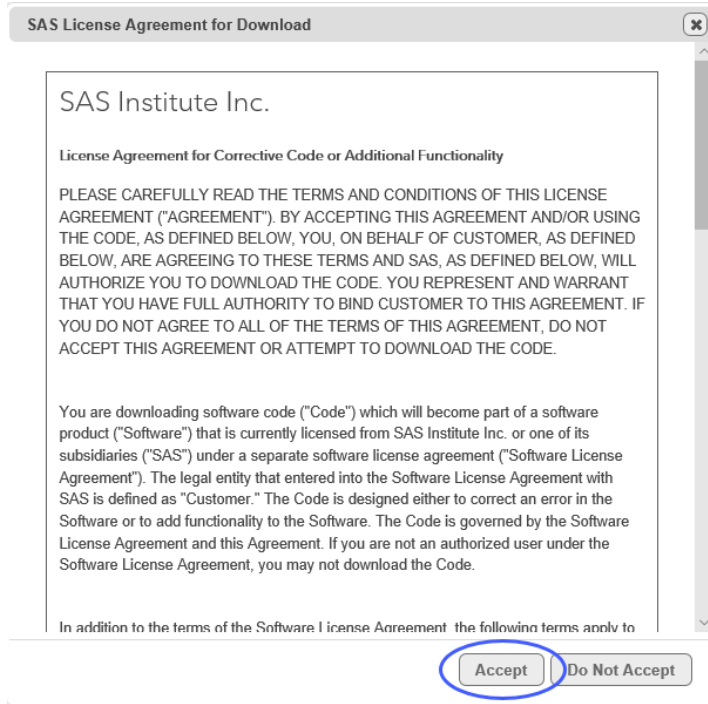
**Notes:**

- This release of the SAS Download Manager can be used to download SAS Software orders for SAS 9.2, SAS 9.3, SAS 9.4, JMP software, and other SAS downloadable software.
- It is very important that you locate your **original** Software Order E-mail or contact your SAS Installation Representative at your site for the correct order and SAS Installation Key to download the software. **You can NOT use the renewal order number.** The renewal order is a license update and it cannot be used to download software.

To begin the download process, select the item in the table below which best meets your needs.

SAS Download Manager						
Platform	Description	Request Download	Size	Uncompressed	Release Date	ReadME
64-bit enabled AIX	SAS Download Manager	<a href="#">esdclient_94566_r64_xx_web_1</a>	161MB	607MB	2021-06	<a href="#">pdf</a>   <a href="#">txt</a>
64-bit enabled Solaris	SAS Download Manager	<a href="#">esdclient_94566_s64_xx_web_1</a>	67MB	607MB	2021-06	<a href="#">pdf</a>   <a href="#">txt</a>
HP-UX IPF	SAS Download Manager	<a href="#">esdclient_94566_h6i_xx_web_1</a>	126MB	607MB	2021-06	<a href="#">pdf</a>   <a href="#">txt</a>
Linux for x64	SAS Download Manager	<a href="#">esdclient_94566_lax_xx_web_1</a>	62MB	607MB	2021-06	<a href="#">pdf</a>   <a href="#">txt</a>
Macintosh	SAS Download Manager	<a href="#">esdclient_94566_mac_xx_web_1.dmg</a>	66MB	607MB	2021-06	<a href="#">pdf</a>   <a href="#">txt</a>
Microsoft® Windows® for x64	SAS Download Manager	<a href="#">esdclient_94566_wx6_xx_web_1.exe</a>	46MB	607MB	2021-06	<a href="#">pdf</a>   <a href="#">txt</a>
Solaris for x64	SAS Download Manager	<a href="#">esdclient_94566_sax_xx_web_1</a>	65MB	607MB	2021-06	<a href="#">pdf</a>   <a href="#">txt</a>
Windows	SAS Download Manager	<a href="#">esdclient_94566_win_xx_web_1.exe</a>	46MB	607MB	2021-06	<a href="#">pdf</a>   <a href="#">txt</a>
z/OS	SAS Download Manager	<a href="#">esdclient_94566_mvs_xx_web_1.zos</a>	18MB	607MB	2021-06	<a href="#">pdf</a>   <a href="#">txt</a>

☞ Click the link in the **Request Download** column to request the download for the desired platform.



You must read and accept the SAS License agreement to proceed further.

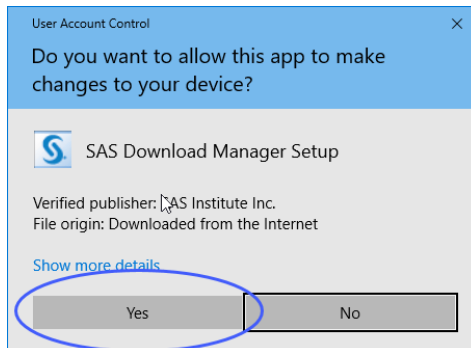
☞ Click **Accept** to proceed.

The SAS Download Manager application is downloaded into the Downloads folder of your computer.



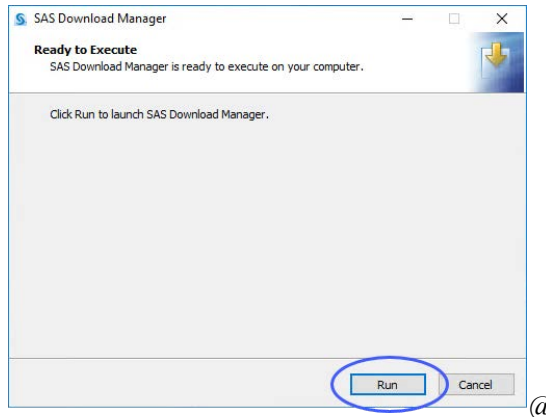
☞ Click **Run**.

A window asking you to allow the SAS Download Manager to modify your computer will open.



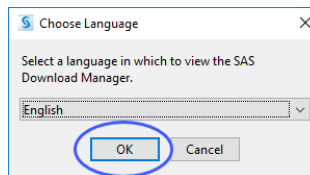
☞ Click **Yes**.

A window asking you to launch the SAS Download Manager will open.



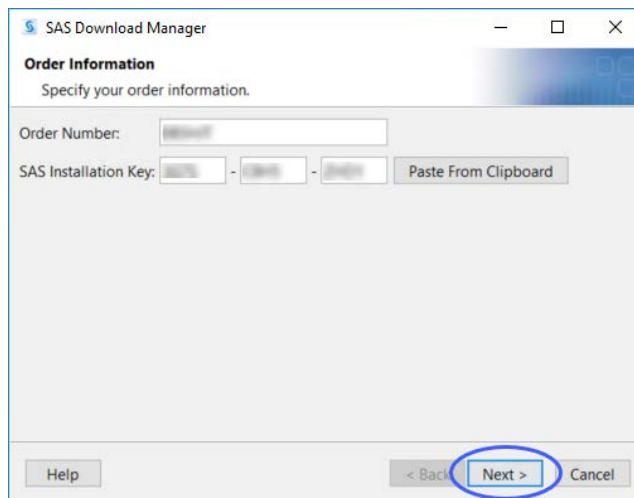
☞ Click **Run**.

A window asking you to specify the language of your installation will open.



☞ Select **English** and click **OK**.

☞ Enter your order number and installation key (from the email) in the text fields.



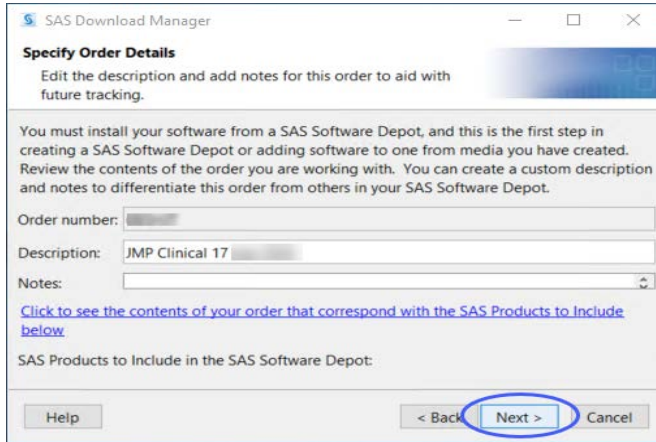
---

Note: These fields may already be populated if you have downloaded previous JMP orders. Clear the fields and enter the values from the new software order email you received for JMP Clinical 17.

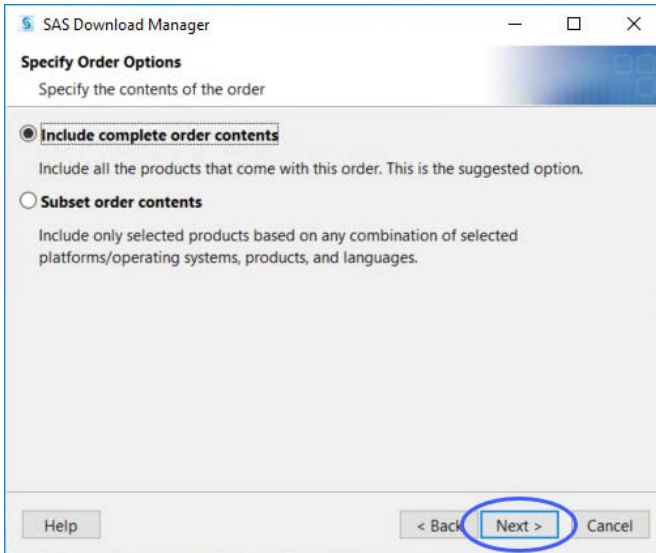
---

☞ Click **Next**.

☞ Examine the order details.



☞ Click **Next**.



☞ Make sure that **Include complete order contents** is selected.

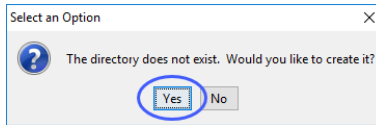
☞ Click **Next**.

☞ Specify where the software depot is to be installed.

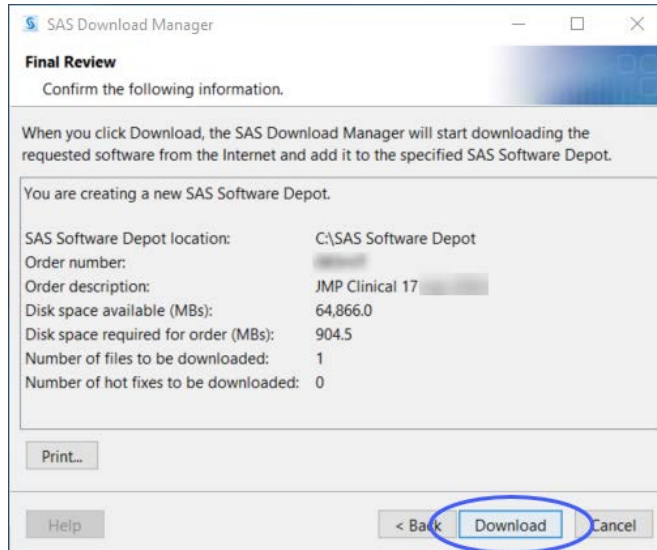
By default, the software depot is installed to the C:\SAS Software Depot directory. If this directory does not exist, it is created for you. You can accept the default location or specify an alternate location.

☞ If prompted, click **Yes** to create a directory for the Software Depot.



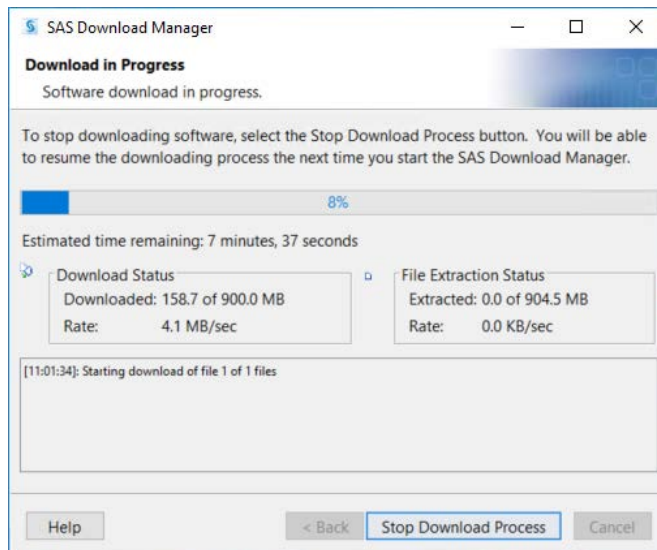


☞ Review the install information.

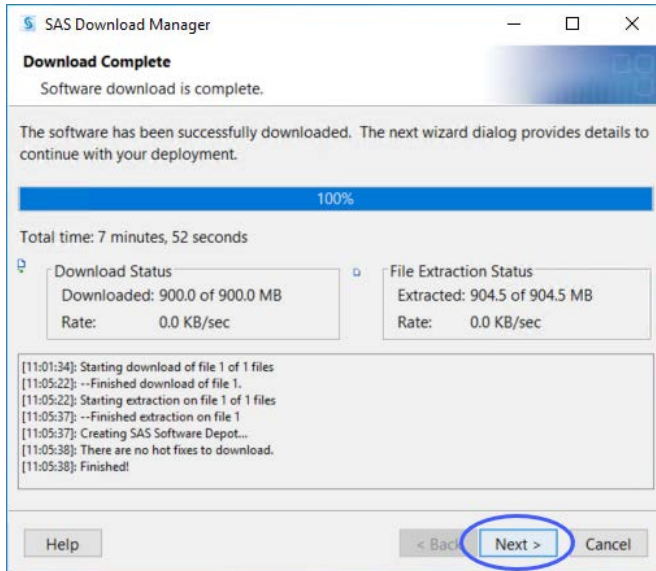


☞ Click **Back** if you need to make any changes. Otherwise, click **Download**.

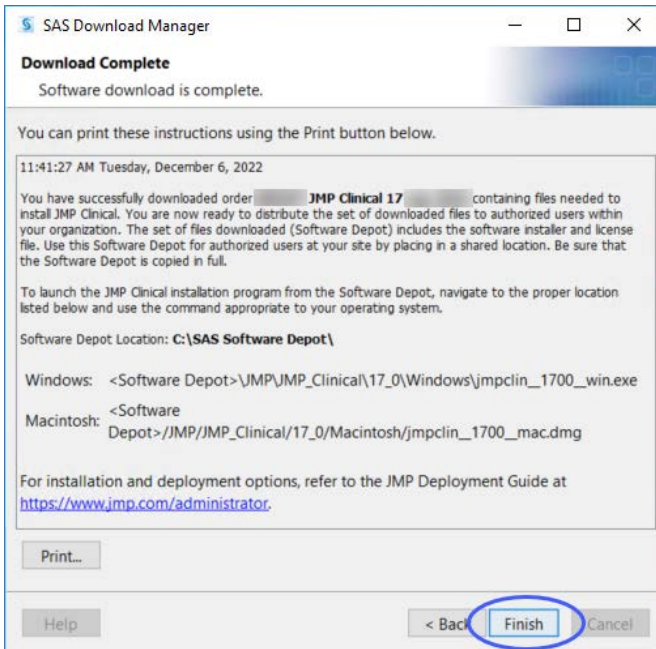
The download process begins. You must wait for this process to complete.



When the download process is complete, the **Next** button is surfaced.



☞ Click **Next**.



☞ Click **Finish**.



☞ Click **Finish**.

☞ Proceed to [“Step 2: Install JMP Clinical Software,” p. 12.](#)

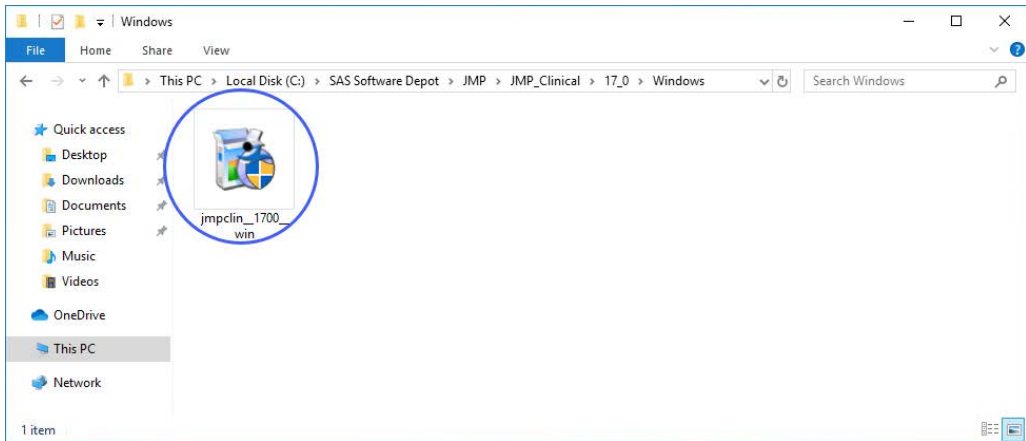
## Step 2: Install JMP Clinical Software

**Step 2a: Determine the location of the SAS Software Depot containing the JMP Clinical software to be installed.**

By default, the location of the depot is C:\SAS Software Depot.

**Step 2b: Open the SAS Software Depot.**

☞ Navigate to C:\SAS Software Depot\JMP\JMP\_Clinical\17\_0\Windows.

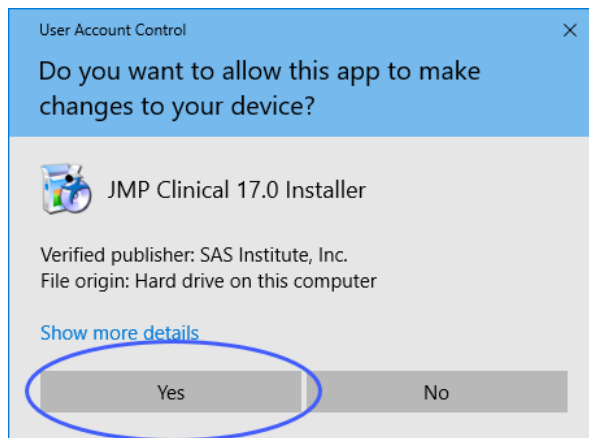


☞ Right-click on the JMP Clinical Installer (circled above) and select **Run as Administrator**.

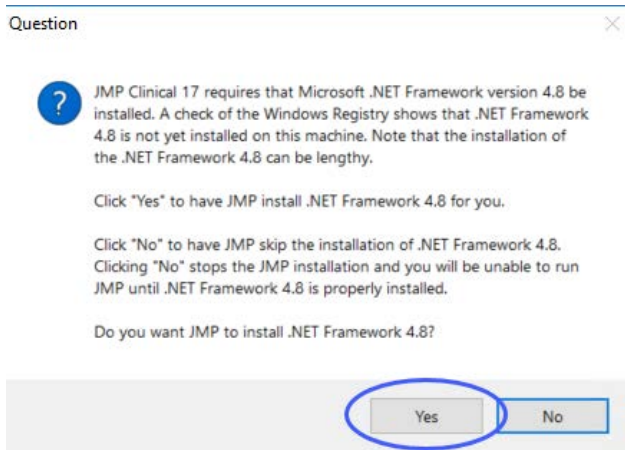
☞ Proceed to Step 2c.

**Step 2c: Installation**

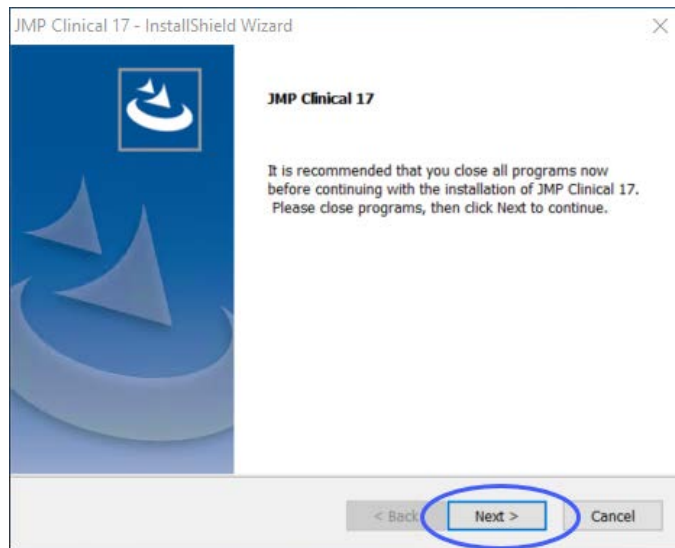
☞ Click **Yes** to allow the installer to proceed.



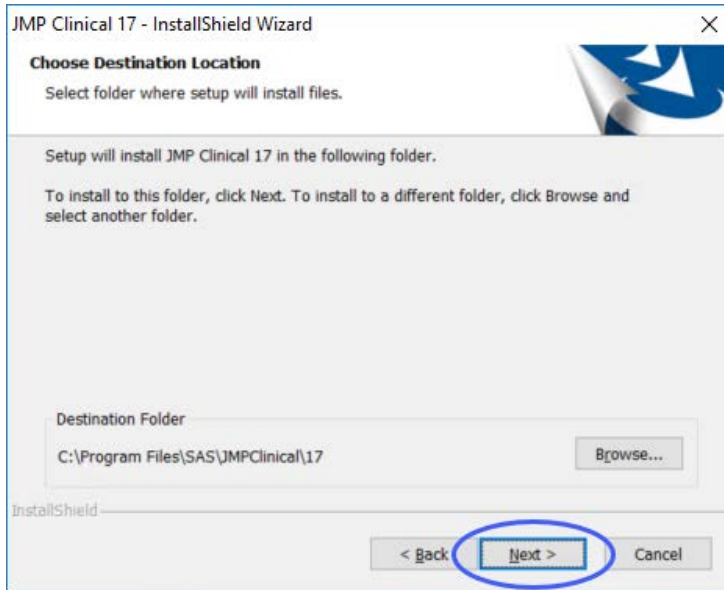
JMP Clinical 17 requires Microsoft .NET Framework 4.8 or higher. If this software is not installed on your machine, you will be prompted to let JMP Install it. If prompted, click **Yes**



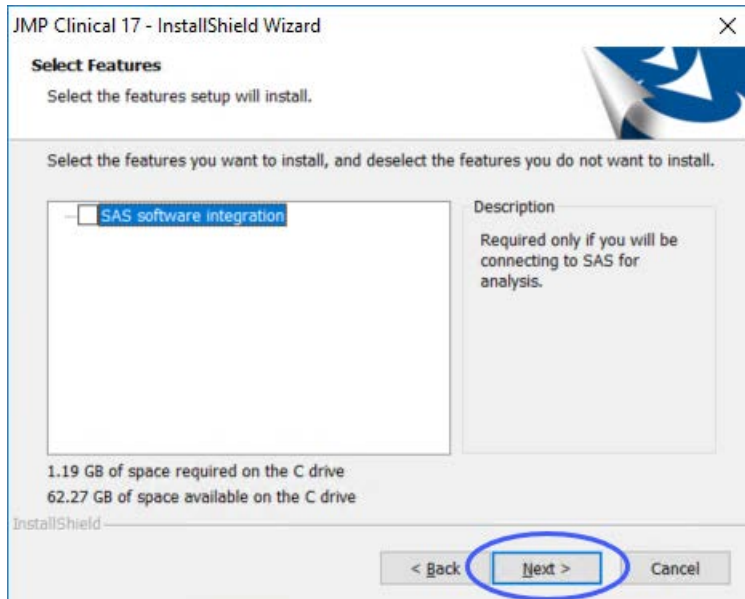
☞ Click **Next** to start the installer.



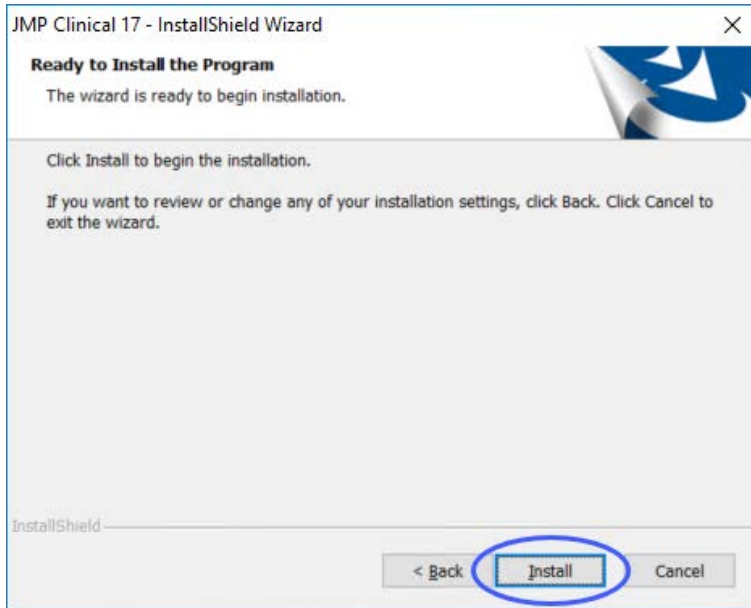
☞ Specify the location for your software and click **Next**.



☞ If you plan to connect to SAS software, check the box and click Next. If not, just click Next.

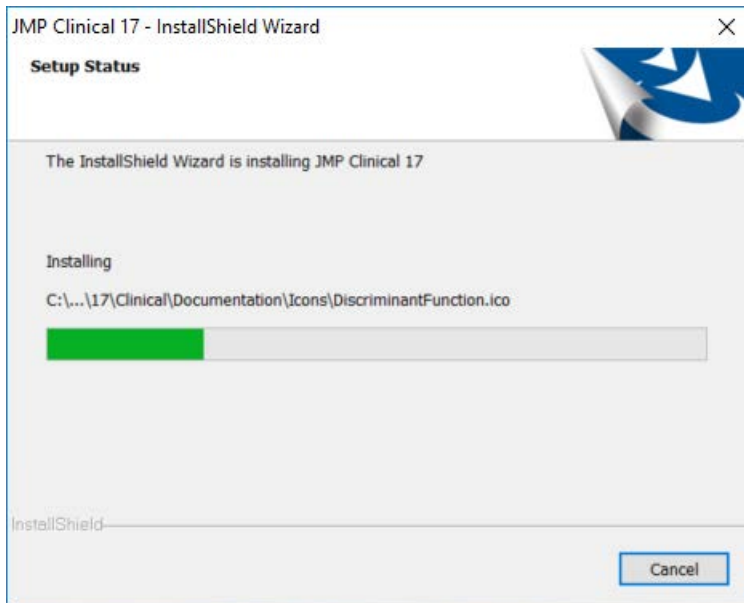


The installer is ready to begin.

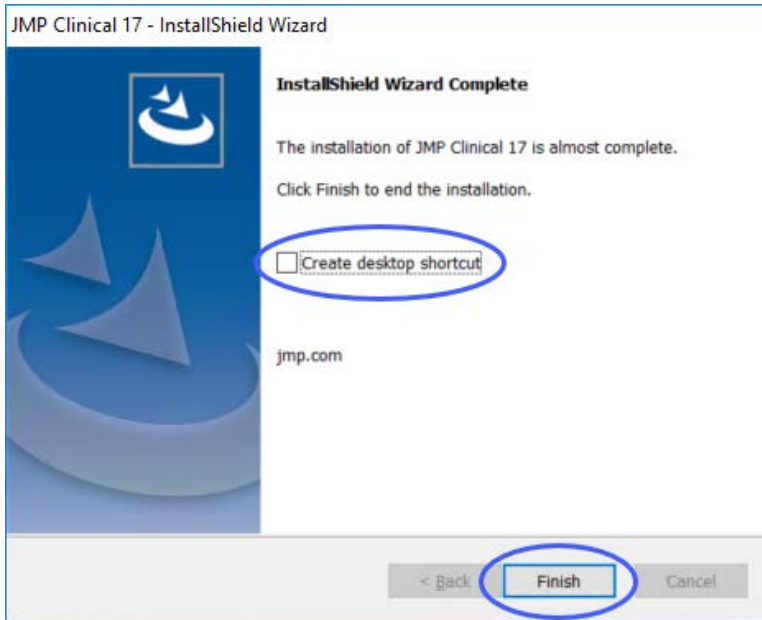


☞ Click **Install**.

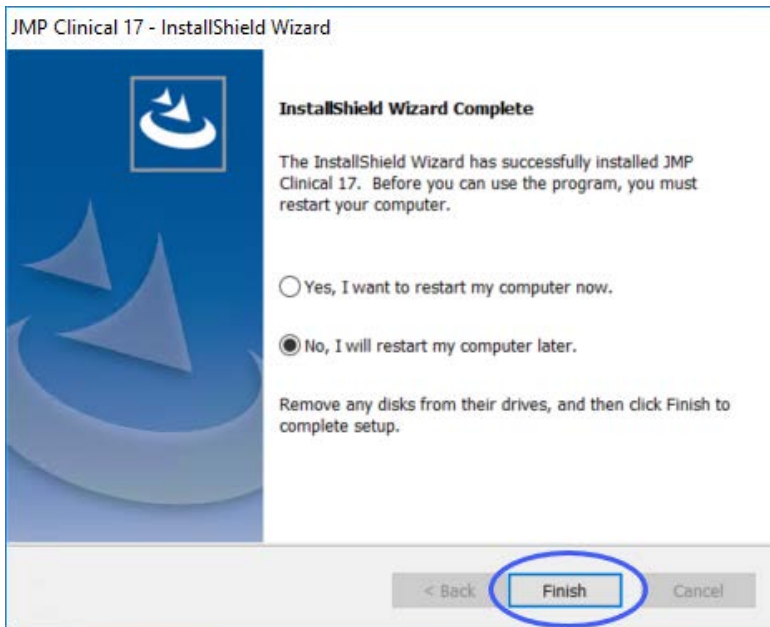
The Installer begins.



☞ Check the box to install a desktop shortcut, if desired. Click **Finish** to complete the installation.



You may be prompted to restart your computer.



☞ If prompted, indicate when you want to restart your computer and click **Finish**.



**Step 2d: Verify that JMP Clinical has been successfully installed.**

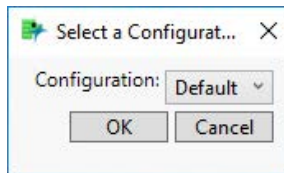
You must restart your computer before proceeding.

☞ Click **Start > All Programs > JMP 17 > JMP Clinical 17** to open JMP Clinical.

The first time you open JMP Clinical, you might be asked to register your software. Follow the instructions to register your software.



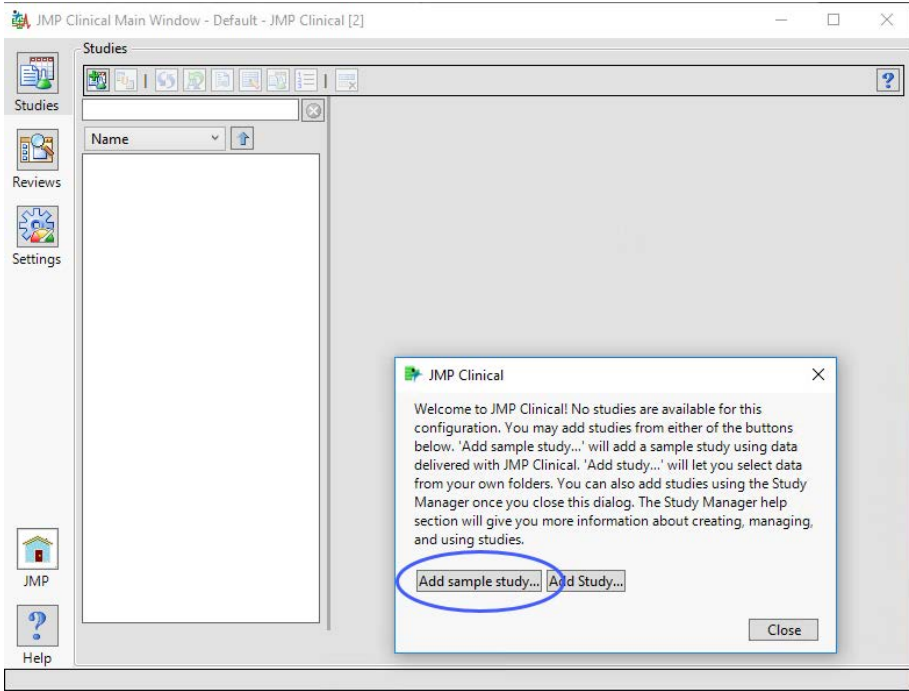
You will be asked to select a configuration.



☞ Select **Default** and click **OK**.

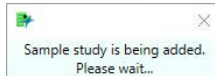
The Clinical Main Window will open. All JMP Clinical processes can be run from the Main Window. You will be prompted to add a study.

☞ Click **Add sample study**.

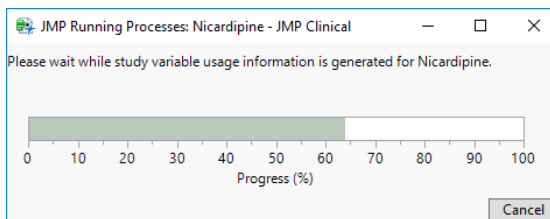
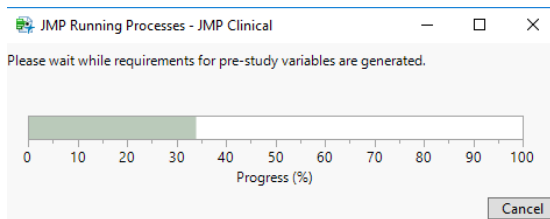


☞ Click **Add sample study...** to add the included Nicardipine study.

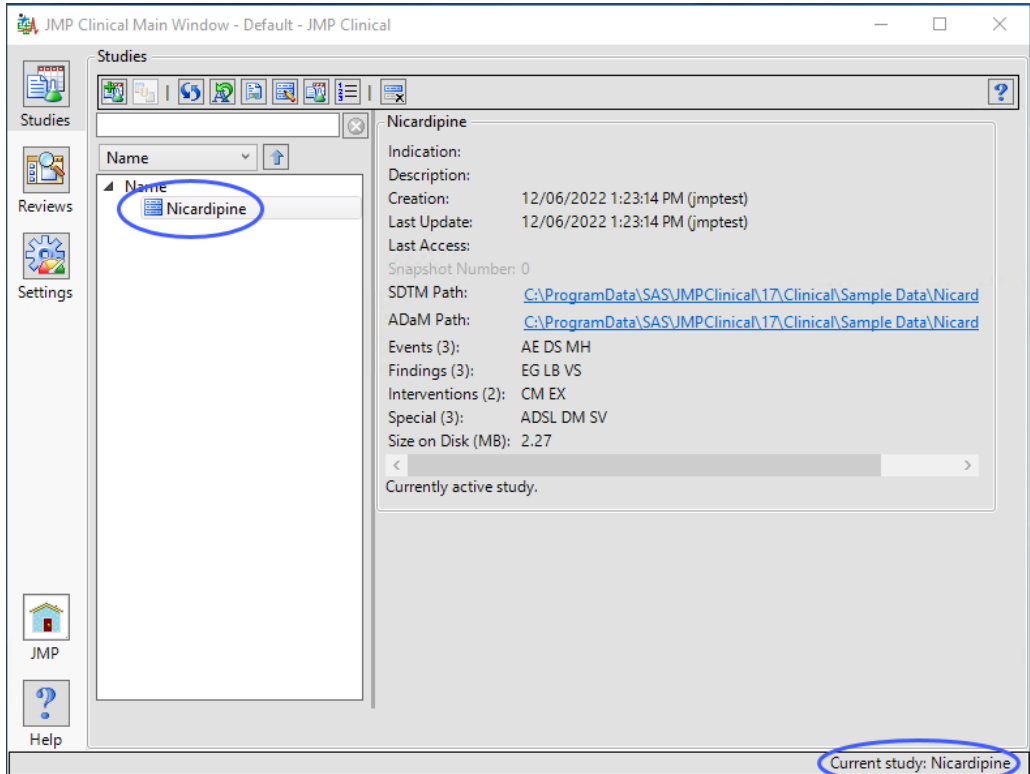
A window appears telling you the study is being added.



Once the study has been added, windows appear telling you the pre-study variables and variable usage information are being generated.



When these processes are complete, the Nicardipine study appears in the study list and is set as the current study.



You should run at least one process (**Demographics Distribution**, for example) to verify successful installation.

- ☞ Click the “Reviews” button in the JMP Clinical Main Window.
- ☞ Click the **Start new Review** button at the top of the window.
- ☞ Click **Demographics Distribution** in the **Select Reports...** window, and click **OK**.

